

2015

---



# Letter from the President



Greetings and a warm welcome to beautiful Scottsdale, Arizona...home of our 16th Annual American Impressionist Society National Juried Exhibition, hosted by Trailside Galleries. We are proud to present to you our largest exhibition to date, featuring 180 juried works from our members as well as works from our AIS Masters, Founders and Officers. In total, nearly 200 paintings are included in this year's exhibition... an exceptional collection of some of the finest Impressionist paintings available today. Sincere congratulations to this year's juried artists for their outstanding achievement in being selected for this prestigious exhibition.

The American Impressionist Society was founded in 1998 by Florida artists William Schultz, Charlotte Dickinson, and Marjorie Bradley of Vero Beach, and Pauline Ney, of Ellenton. Their goal was, and continues to be, to promote the appreciation of American Impressionism and to provide artists working in the Impressionist genre with exhibition, educational and networking opportunities. We are a 501(c)(3) nonprofit corporation.

In February of this year, Charlotte Dickinson and her husband, CEO/Treasurer, decided to retire from their leadership roles in AIS. It is an incredible honor and privilege to have been chosen by the Dickinsons and the AIS Board of Directors as the new CEO/President of AIS, along with my husband, Don, as the new National Treasurer. We sincerely appreciate the faith and trust that they have placed in us. Don and I are thoroughly enjoying serving AIS and our members and look forward to a great future. Building on the strong foundation established by our founders and past AIS officers, we are planning some great new opportunities and benefits for our members. I invite you to join us! You will find more information about membership on our website and also on the inside back page of this catalog.

Putting together an exhibition of this caliber takes an extraordinary amount of time and hard work, and I would personally like to thank everyone who has had a part in this year's show. From Trailside Galleries and their wonderful staff, to our generous sponsors, all of our volunteers, our members, all who submitted work for jurying this year, the jury panel, our esteemed AIS Masters, our judge of awards and workshop instructor Carolyn Anderson (AISM), our AIS Board, Founders, Vice President Cheryl St. John, and our Show Chair, Becky Joy, sincere thanks to you all. This show would not be possible without each and every one of you. Thank you for your time, your hard work and your dedication to AIS.

Finally, it's my pleasure to invite you to enjoy the beautiful collection of Impressionist works of art in this catalog. I encourage you to contact Trailside Galleries when you find one that speaks to your heart. On behalf of our Board, Officers, founder Charlotte Dickinson, and Chairman Emeritus T.R. Dickinson, thank you so much for your support of American Impressionism, our artist members and the American Impressionist Society.

Warmest wishes,

Debra Joy Groesser, AIS CEO/President



#### On the cover:

"Coachman" by Carolyn Anderson, AISM 24x18 oil \$8,400  
Show catalog produced by Tonya Zenin.  
Printed by Digital Express, La Vista, Nebraska

[www.AmericanImpressionistSociety.org](http://www.AmericanImpressionistSociety.org)

# Juror of Awards



## Carolyn Anderson Bio, AISM

Carolyn Anderson's home and studio are located in northern Montana, west of Havre, Montana and forty miles from the Canadian border.

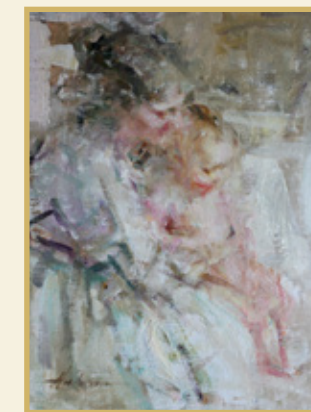
Originally from the Chicago area, Anderson attended school at Illinois State University. While there, she took time off to join VISTA (Volunteers in Service to America) and was assigned to the Rocky Boy Reservation in north central Montana. Several years later she returned to make this part of the West her permanent home.

Anderson has developed her own singular style, learning from other artists who inspired and supported her, but experimenting with the boundaries of traditional techniques. William Reese called her work "poetry – a poetic painting grows as time goes on." Over the years, she has received numerous awards for her paintings, including twice winning the C.M. Russell Museum Auction Best of Show and being awarded several Master Awards of Excellence at the American Impressionist Society show. She is a member of the Northwest Rendezvous, the recipient of several NWR Merit Awards, and is a Master Artist with the American Impressionist Society. Her paintings have been featured in numerous publications, including Southwest Art, Art of the West, The Big Sky Journal, Fine Art Connoisseur, and American Artist.

Anderson has acquired an excellent reputation as a painting instructor, teaching several workshops a year. She has taught for the Fechin School, Scottsdale Artists' School, the Frye Museum, and Walt Disney Imagineering. While doing work for Walt Disney Imagineering in California, she was contracted to research and write about visual language. She has continued her research in that area of art and science, and continues to use the information in lectures and workshop instruction.

Visit Carolyn's website at: [www.carolynanderson.com](http://www.carolynanderson.com)

*"I think it's important to remind ourselves of the origins of Impressionist painting. It is easy to forget how novel and controversial this painting style once was. When artists rebelled against the academic tradition they set out on a path of discovery - exploring light and color. Empowered by the invention of the tin paint tube, they were not only able to paint outdoors, but also to create unplanned and spontaneous paintings. Painting would never again be the same. The Impressionists changed how we see. They gave us violet and blue shadows, light, atmosphere, and most importantly, the right to experiment with personal style."* -Carolyn



"Mother and Child"  
9x12 oil by Carolyn Anderson AISM  
2014 AIS Master Award of Excellence

[www.AmericanImpressionistSociety.org](http://www.AmericanImpressionistSociety.org)

# Letter from the Vice President



A warm welcome to all attendees of the American Impressionist Society's 16th Annual National Exhibition held at Trailside Gallery in Scottsdale, Arizona.

This year's show is nothing short of outstanding! The caliber of artists, the creativity shown and of course the impressionistic style shines through like never before. Take time and enjoy each and every painting in the show, there's always something to learn and appreciate. If you can't be in attendance this year, I hope this catalog will suffice in bringing you the quality and beauty of each and every painting and if you happen to fall in love with one of these amazing paintings, be sure and contact Trailside Gallery to add it to your collection.

Also, a big thank you to Carolyn Anderson for taking on the challenging task of judging this year's show and for teaching a fabulous workshop. We all appreciate your time and your talent!

I also want to thank all of our Sponsors, Trailside Gallery and Staff, Volunteers for their precious time and efforts and all of our Members for making this show a success.

Most importantly, congratulations to all of the artists whose work was selected for this year's show. You should all be very proud of yourselves and your achievement. The jury process, as always, was very competitive with over 1400 entries from very skilled and accomplished professionals so if you're in the show give yourself a pat on the back!

Warmest wishes,

Cheryl St. John  
Vice President



# Letter from the Show Chair

Welcome to Scottsdale, Arizona and the American Impressionist Society's 16th National Juried Exhibition hosted by Trailside Galleries. I would like to extend a very special thank you to Trailside Galleries and their staff and the gallery staff for their hard work hosting this show of amazing artists in this wonderful gallery.

I also want to congratulate the exhibiting artists who were selected for this show from a record of over 1,400 paintings entered this year. You should be very proud of yourself for your accomplishment. Carolyn Anderson, AISM will be judging 180 juried paintings which will receive awards from our show sponsors. Thank you Carolyn for doing this difficult task. Debra Joy Groesser, our President, will give the President's Choice Award of Excellence. The Artists' Choice Award of Excellence will be chosen by vote from the attending artists.

Thank you to the AIS board who has placed their trust in me as Show Chair again this year. It has been an honor and a pleasure in working with our President, Debra Joy Groesser and our Vice-President, Cheryl St. John during the year. Thank you to both of these women and to the many volunteers that have helped to put this show together. Thank you to all of you. We have a fantastic program lined up for our members in conjunction with the show this year. I appreciate all of you for your generosity in helping to make this program possible. Thank you. And lastly, our sponsors, who play a very important part in this show. Without the prizes that they have so generously donated, we would not be able to offer our impressive list of awards. Thank you very much!

The best to all of you,

Becky Joy  
AIS Show Chair



## 2015 Volunteers

Many thanks to all of our committee chairs and volunteers who worked so hard to make this exhibition possible. A complete list of volunteers will be printed in our newsletters and on our Facebook page.

Tonya Zenin – Graphic Design - Catalogue, Prospectus

Janet Anderson – Sponsor/Award Committee

Wendie Thompson – Sponsor/Award Committee

Cheryl St. John – Advertising Committee

Vanessa Rothe – Educational Programming

All information current at time of printing.

# Awards

## Awards over \$60,000 in cash and prizes



### AIS 2015 Awards-Juried Cash awards Funded by AIS

Best of Show.....	\$12,000
Second Place.....	\$8000
Third Place.....	\$4000
William Schultz Award in Oils.....	\$1000
Dickinson Signature Member Award.....	\$1000
President's Choice Award.....	\$1000
Award of Excellence for Pastels.....	\$1000
Award of Excellence for Watermedia.....	\$1000

### AIS 2015 Publication Sponsor Awards-Master Artists

Southwest Art Magazine Master Award of Excellence.....	Full page ad valued at \$3,380
American Art Collector Master Award of Excellence.....	Full page ad valued at \$3,100

### AIS 2015 Publication Sponsor Awards- Juried Artists

Fine Art Connoisseur Award of Excellence.....	Full page ad valued at \$3,800
Plein Air Magazine Award of Excellence.....	Full page ad valued at \$3,800
Southwest Art Magazine Award of Excellence.....	Full page ad valued at \$3,380
American Art Collector Award of Excellence.....	Full page ad valued at \$3,100
Plein Air Magazine Associate Member Award of Distinction.....	Quarter page ad valued at \$1100

### Artist's Choice Award

Fine Art Connoisseur Half Page Ad Award (\$2000 value), Strada Easel \$300 easel, FASO Artist Websites \$300 cash, Wind River Arts \$300 merchandise certificate

Gamblin Artist Oils Awards of Distinction.....	Two awards, \$500 merchandise certificate each
Michael Harding Handmade Artist Oil Colours Awards of Distinction.....	Two awards, \$500 merchandise certificate each
Artwork Archive Award of Merit.....	\$500 subscription gift certificate
Blick Art Materials/Utrecht Award of Merit.....	\$500 (\$250 merchandise certificate from each)
Blue Ridge Oils Award of Merit.....	\$500 merchandise certificate
Chesapeake Fine Art Studio Award of Merit.....	\$500 Workshop Scholarship
Fredericksburg Artist's School Award of Merit.....	\$500 Workshop Scholarship
Honorable Mention.....	\$300 cash (AIS) and Rosemary and Co. Brushes \$250 merchandise certificate
Honorable Mention.....	\$300 cash (AIS) and ArtFrames.com \$250 merchandise certificate
Honorable Mention.....	\$300 cash (AIS) and SourceTek \$250 merchandise certificate
Honorable Mention.....	\$300 cash (AIS) and Judson Art Outfitters \$200 merchandise certificate
Honorable Mention.....	\$300 cash (AIS) and Jack Richeson & Co. \$150 merchandise certificate
Honorable Mention.....	\$300 cash (AIS) and Judson Art Outfitters \$150 merchandise certificate
Honorable Mention.....	\$300 cash (AIS) and RayMar Art \$150 merchandise certificate
Honorable Mention.....	\$300 cash (AIS) and Jack Richeson & Co. \$125 merchandise certificate
Honorable Mention.....	\$300 cash (AIS) Gamblin Artist Oil Colors \$120 paint set
Honorable Mention.....	\$300 cash (AIS) and Jack Richeson & Co. \$100 merchandise certificate
Honorable Mention.....	\$300 cash (AIS) and Judson Art Outfitters \$100 merchandise certificate
Honorable Mention.....	\$300 cash (AIS) and High Plains Frames \$100 merchandise certificate

# 2015 Sponsors

## Platinum Publication Sponsors



www.fineartconnoisseur.com



www.americanartcollector.com



www.pleinairmagazine.com



www.southwestart.com

### Premium Award Sponsors:

Gamblin Artist Oil Colors  
Michael Harding Handmade Artist Oil Colours

### Supporting Award Sponsors:

Artwork Archive  
Blick Art Materials/Utrecht  
Blue Ridge Oils  
Chesapeake Fine Art Studio  
Fredericksburg Artists School

### Program Sponsors:

Fine Art Connoisseur.....	Morning at the Museum of the West
Southwest Art Magazine.....	All Member Paintout
American Art Collector.....	Closing Reception/Cocktail Party
Barney Davey and Jason Horesj.....	10 Things Artists Can Do To Sell More Art
Vanessa Rothe, AIS, West Coast Editor Fine Art Connoisseur.....	The Making of American Impressionism
Lois Griffel, AIS Master.....	"Painting the Impressionist Landscape"

### Contributing Award Sponsors

Judson Art Outfitters  
Jack Richeson & Co.  
FASO Artists Websites  
Wind River Arts  
Strada Easels  
ArtFrames.com  
SourceTek  
Rosemary and Co.  
RayMar Art  
High Plains Frames

# AIS Master Artists

AIS Masters are invited by the AIS Board of Directors and may sign "AISM" after their name. Masters are selected carefully and are considered to be leaders in the art community. Nationally known, they epitomize the highest level of impressionism and passionately give back to the society by sharing their knowledge.

## Our AIS Masters:

- |                      |                     |
|----------------------|---------------------|
| Carolyn Anderson     | Albert Handell      |
| Kenn Backhaus        | Quang Ho            |
| Clayton J. Beck III  | Peggi Kroll-Roberts |
| Scott Burdick        | Calvin Liang        |
| Nancy Bush           | Weizhen Liang       |
| Betty Carr           | Huihan Liu          |
| Scott L. Christensen | Kevin Macpherson    |
| Kim English          | C.W. Mundy          |
| Jerry Fresia         | William Schneider   |
| Lois Griffel         | Zhiwei Tu           |



CAROLYN ANDERSON  
"Coachmen" 24x18 oil \$8400



WILLIAM SCHNEIDER  
"Tres Chic" 24x18 oil \$3700



KIM ENGLISH  
"Tracks of Winter" 10x15 oil \$2500



KENN BACKHAUS  
"Counter Attack" 30x30 oil on linen \$11,500



ALBERT HANDELL  
"Aging Beauty" 18x24 oil \$10,000



PEGGI KROLL-ROBERTS  
"Floral" 30x24 oil \$3800



CALVIN LIANG  
"Sailing Into the Sunset" 12x9 oil \$1600

# AIS Master Artists



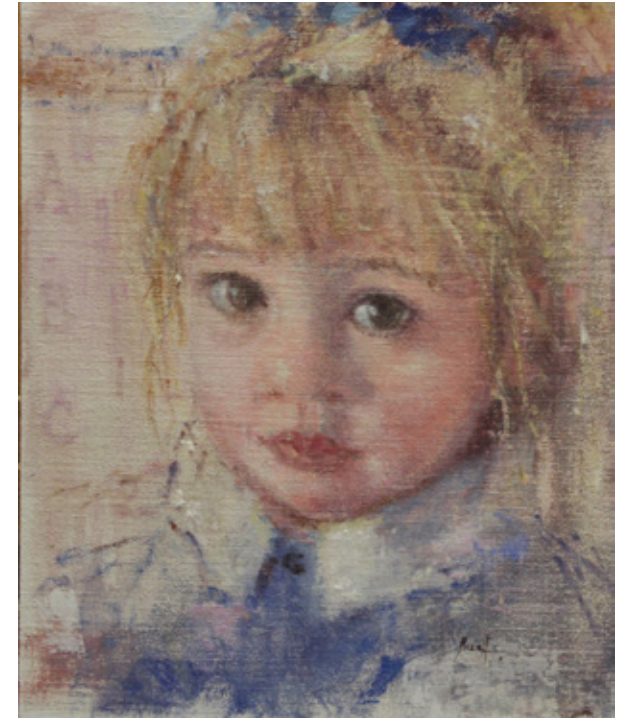
HUIHAN LIU  
"Night in Venice" 12x16 oil \$4300



BETTY CARR  
"Rolling Through the Valley" 18x24 oil \$4,000



C.W. MUNDY  
"Point Lobos, California Coast" 16x20 oil \$7500



NANCY BUSH  
"Young School Girl" 10x12 oil on Belgian linen \$2900



WEIZHEN LIANG  
"Flying Flower and Weightless World" 20x20 oil on canvas \$3500



JERRY FRESIA  
"Rainy Day" 24x18 oil on canvas \$10,000



CLAYTON J. BECK III  
"Autumn" 12x16 oil on panel (DETAIL) \$18,000



KEVIN MACPHERSON  
"Autumn Mood" 24x36 oil on linen \$18,000

# Officers

## AIS 2015 Officers

**Debra Joy Groesser, AIS**  
President/CEO

**Cheryl St. John, AIS**  
Vice President

**Becky Joy, AIS**  
Show Chair

**Don Groesser**  
National Treasurer

**Charlotte Dickinson, AIS**  
Founder

**T.R. Dickinson**  
Chairman Emeritus

## AIS Founders

**Charlotte Dickinson, AIS**  
Original Founder

**William J. Schultz,**  
1919 – 2005  
Co-Founder

**Marjorie Bradley, AIS**  
Co-Founder

**Pauline Ney, AIS**  
Co-Founder



DEBRA JOY GROESSER, AIS  
AIS PRESIDENT  
"Garden Celebration" 9X12 oil, \$1,100

# Founders



CHARLOTTE DICKINSON, AIS Founder, AIS  
"Taos Mission" 20X24 oil, \$2900



PAULINE NEY, AIS  
"Longboat Pass, Florida" 10x20 oil on canvas \$1900



CHERYL ST. JOHN, AIS  
AIS Vice President  
"Late Summer" 22X30 oil, \$4,850



BECKY JOY, AIS  
AIS Show Chair  
"Days Gone By, Ireland" 16X20 oil, \$2,200



MARJORIE BRADLEY, AIS  
"Autumn Still Life" 16x20 oil, \$2500



WILLIAM SCHULTZ, AIS  
"Twilight Shining" 14x18 oil (NFS-not included in exhibition)

# Juried Works



VALERIE AMON, AIS  
"Looking In" 18X14 Oil, \$1,850



WILLIAM ANGRESANO  
"Leona" 16X12 Oil, \$1,500



MITCH BAIRD, AIS  
"Vivien" 10X8 Oil, \$950



SUZIE BAKER  
"Music for Mary" 9X12 Oil, \$900



JANET ANDERSON  
"Secret Stand" 12X16 Oil, \$975



BARBARA APPLGATE  
"Fresh from the Garden" 16X12 Oil, \$2,400



FRANK BAGGETT  
"Cutbank Tree" 24X30 Oil, \$3,200



CINDY BARON  
"Intimacy of Sea Smoke" 22X28 Oil, \$5,100



JOE ANNA ARNETT  
"Pale Peonies" 12X16 Oil, \$3,200



SUSAN ASTLEFORD  
"Sing a Song of Sunflowers" 18X14 Oil, \$1,950



STACY BARTER  
"Harmony in Yellow" 16X20 Oil, \$3,000



DAN BECK  
"Back to Nature" 20X10 Oil, \$2,200



# Juried Works



CHULA BEAUREGARD  
"Last Light on the Divide" 12X16 Oil, \$1,050



KEVIN BEILFUSS  
"Jade" 16X20 Oil, \$3,700



JILL BERRY  
"Working Girl" 12X16 Oil, \$1,100



SUSAN BLACKWOOD, AIS  
"The Good Shepherd" 24X18 Oil, \$5,400



BOB BECK, AIS  
"Early Snow" 16X20 Oil, \$1,800



LESLIE BELOSO  
"A Painter's Tools" 10X8 Oil, \$1,500



DON BIEHN, AIS  
"Big Guy On The Rails" 8X10 Oil, \$1,500



MARK BOEDGES  
"March Snow" 12X18 Oil, \$3,500



LORI BERINGER  
"Sweet Offering" 25X30 Oil, \$2,500



DONNA BIGGEE  
"Day's Last Light" 16X20 Oil, \$2,250



ERIC BOWMAN, AIS  
"Waiting for Summer" 12X12 Oil, \$1,850



THOMAS BREEDON  
"Sunflowers and Eucalyptus" 11X14 Oil, \$700

# Juried Works



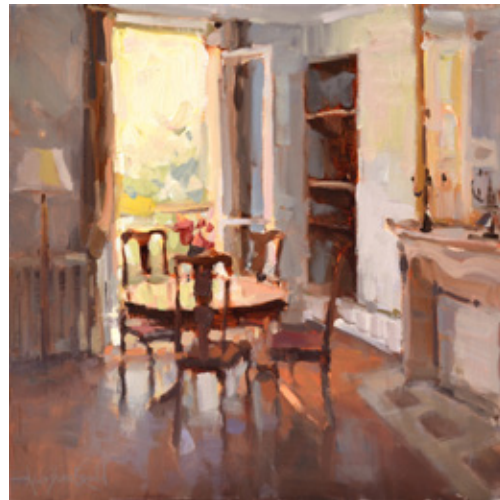
DAVID BOYD JR  
"The Bridge to Nowhere" 16X20 Oil, \$1,800



MARLA BRENNER  
"Flowers with Pears" 16X12 Oil, \$1,850



RICHARD BOYER  
"Afternoon Light" 30X30 Oil, \$6,800



ANNE BLAIR BROWN, AIS  
"A Paris Apartment" 20X20 Oil, \$3,600



MICHELE BYRNE  
"Soho Hustle" 30X24 Oil, \$2,800



JIM CARSON  
"After the Rain in Asheville" 16X20 Oil, \$1,750



The cure for claustrophobia.

PleinAir  
MAGAZINE

Bring the outside into your home.  
800-610-5771 | pleinairmagazine.com

Sheepscot Morning, Donald Demers (detail)

# Juried Works



KEN CADWALLADER, AIS  
"Yellow Roses Wrapped In Violet" 24X20 Oil, \$5,000



JOHN MICHAEL CARTER, AIS  
"North Light Study" 30X20 Oil, \$6,000



LAWRENCE CHURSKI  
"Valley Acres" 18x24 Oil, \$7,500



JAMES COE, AIS  
"Swamp Willows" 16X26 Oil, \$3,300



LARRY CANNON  
"Fall Vineyard" 10X14 Watercolor, \$1,850



MARC CHATOV  
"Veteran Study" 22X20 Oil, \$2,600



COLETTE CLAROS  
"Saturday Fishing" 24X18 Oil, \$1,900



DEDE COLLICOTT  
"Ruth" 12X12 Oil, \$1,000



ROBIN CHEERS  
"Saturday Chores" 16X12 Oil, \$1,200



PATRICIA CLAYTON  
"Cascades" 14X11 Oil, \$895



JOHN COOK, AIS  
"Sunlit Goat" 8X10 Oil, \$2,000



KATHLEEN COY  
"Valkyrie" 9X12 Oil, \$1,400

# Juried Works



BETHANNE COPLER, AIS  
"The Sunset Glams His Smile" 12X12 Oil, \$1,400



BILL CRAMER  
"Luminous Towers" 24X24 Oil, \$2,400



TONY D'AMICO  
"Winter at the Marsh" 11X14 Oil, \$2,200



BILL DAVIDSON  
"Coastal Colors" 16X20 Oil, \$1,995



GENE COSTANZA, AIS  
"On a Brighter Note" 8X16 Oil, \$1,200



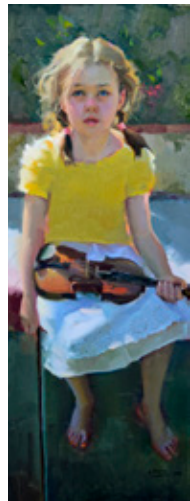
JAMES CRANDALL  
"Claudio at the Deli Counter" 24X36 Oil, \$3,800



MARK DALY  
"Sunny Day" 12X16 Oil, \$2,950



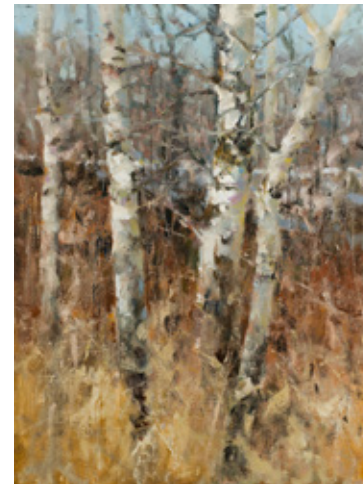
BARBARA DAVIS  
"Summer Roses and Cherries" 12X9 Oil, \$600



NANCY CROOKSTON  
"Miss Margaret with Her Violin" 32X12 Oil, \$5,750



JUDY CROWE, AIS  
"Ribbons and Roses" 8X10 Oil, \$895



DEREK DAVIS  
"Lakeshore Trees" 16X12 Oil, \$1,550



DEE BEARD DEAN, AIS  
"Over the Arno" 12X16 Oil, \$1,775

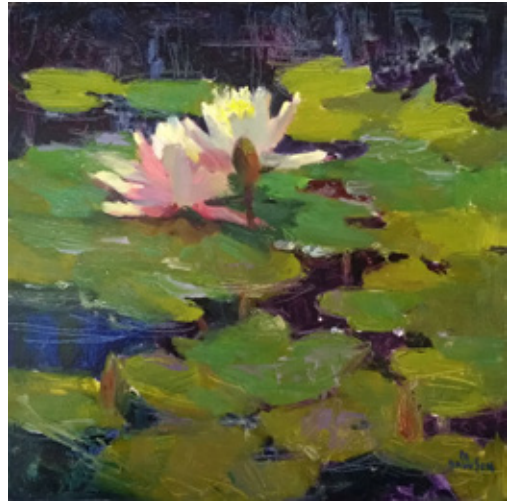
# Juried Works



JULIE DAVIS  
"General Store" 11X14 Oil, \$750



CHRISTINE DEBROSKY, AIS  
"Fern Gully" 16X12 Soft Pastel, \$1,100



DEBRA JOYCE DAWSON  
"Stratford Lily #7: Pas de Deux" 6X6 Oil, \$700



RICK DELANTY  
"Moss Point Morning" 14X18 Acrylic, \$1,500



CAROL DEVEREAUX  
"Andrew at 25 Years" 16X12 Oil, \$1,800



KATIE DOBSON CUNDIFF, AIS  
"Picnic in the Park" 11X14 Oil, \$1,050

See Art Differently.



subscribe today | [fineartconnoisseur.com](http://fineartconnoisseur.com) | 800.610.5771

# Juried Works



JEANNE ECHTERNACH  
"Respite" 8X10 Oil, \$480



SUSAN ELWART HALL  
"May Need Sunglasses" 10X8 Oil, \$700



MARK FARINA, AIS  
"Asilomar Coast - Pacific Grove" 9X12 Oil, \$1,400



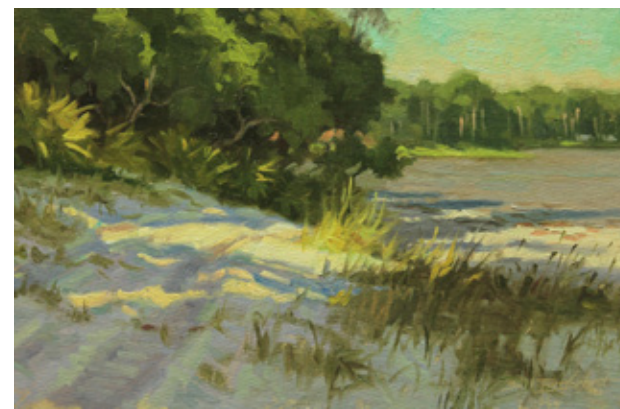
KAYE FRANKLIN, AIS  
"Light Dusting" 12X12 Oil, \$1,250



JOHN EAGLE  
"Canyon Eves" 24X30 Oil, \$600



LOUIS ESCOBEDO  
"Color Notes" 20X20 Oil, \$5,800



BILL FARNSWORTH, AIS  
"Moments" 9X14 Oil, \$1,500



HOWARD FRIEDLAND  
"Peonies and Glass" 20X24 Oil, \$4,300



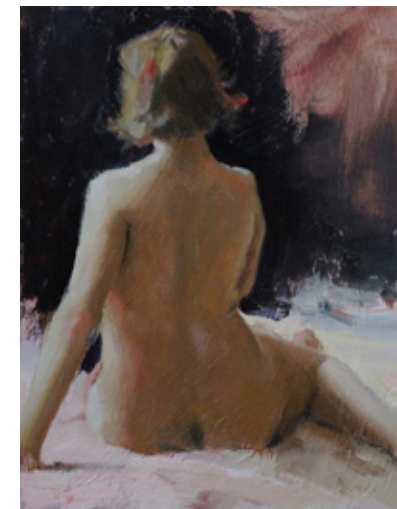
DIANE EUGSTER  
"The Day Begins" 20X16 Oil, \$1,800



TREY FINNEY  
"Cedars Edge" 16X12 Oil, \$1,900



PAULA FRIZBE, AIS  
"Gentry's Barn" 24X36 Oil, \$3,200



STUART FULLERTON  
"Lauren" 14X11 Oil, \$1,200

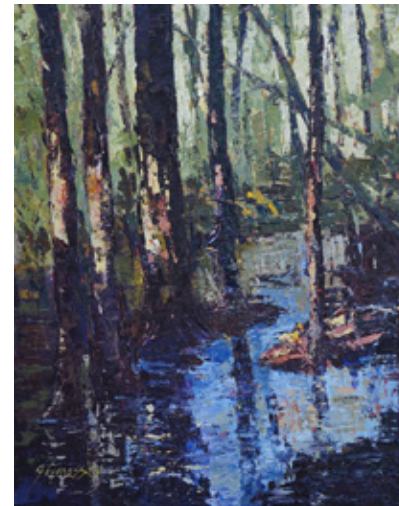
# Juried Works



MARK GINGERICH  
"Winter's Fading Light" 18X14 Oil, \$1,800



TERI GORTMAKER, AIS  
"Heavy Load" 10X8 Oil, \$700



JOHN GROESSER  
"Deep Inside" 30X24 Acrylic, \$1,500



ANN HARDY  
"Please Let Her Come Too" 20X16 Oil, \$2,995



VICTORIA GILLIERON  
"Nap time on Sanibel" 24X36 Oil, \$4,000



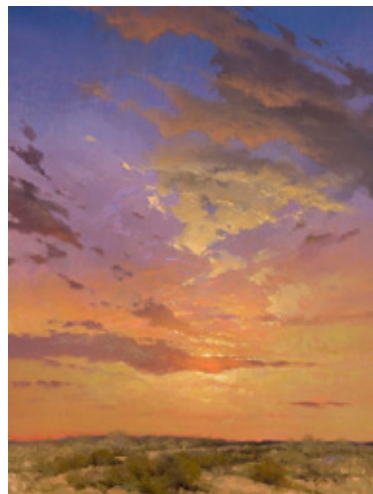
LINDSEY BITTNER GRAHAM, AIS  
"Got Your Back" 16.75x24.5 Oil, \$3,500



BARBARA HAFNER, AIS  
"Black and White" 11.25x14.5 Oil, \$985



PHILIP HARRIS  
"Spruce Creek In May Afternoon" 20X24 Oil, \$1,750



DAVID GRIFFIN  
"Unexpected Peace" 32X24 Oil, \$7,500



JOSEPH GYURCSAK  
"Bushwick" 12X12 Acrylic, \$1,600

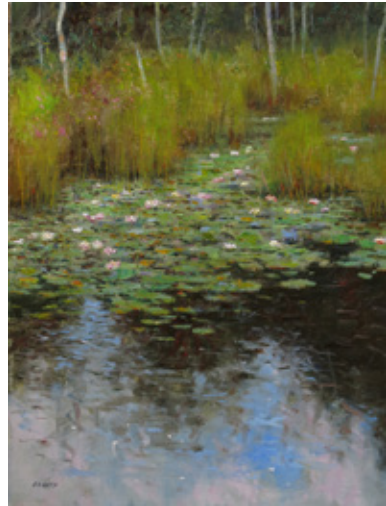


RAY HASSARD  
"Saturated" 12X16 Oil, \$2,000



ELLEN HOWARD  
"Serve Them Up" 11X14 Oil, \$825

# Juried Works



ED HATCH  
"Lily Pads" 16X12 Oil, \$1,600



DEBRA HUSE, AIS  
"Hurry to Harvest" 12X12 Oil, \$1,600



ERIC JACOBSEN  
"Garden Bounty" 20X30 Oil, \$3,400



BRENT JENSEN, AIS  
"Storm Clouds Over Camden" 20X24 Oil, \$3,500



PAULA HOLTZCLAW  
"Looking West" 16X20 Oil, \$2,900



SUSIE HYER  
"Icefall" 24X18 Oil, \$2,850



ERROL JACOBSON  
"Coming and Going" 14X18 Oil, \$2,400



ROBERT JOHNSON  
"Sedona Cliffs" 10X12 Oil, \$1,600



CARMEN ITALIA  
"Central Park" 16X24 Oil, \$2,400



BARBARA JAENICKE  
"Winter's Grace" 11X14 Oil, \$1,200



MICHELLE JUNG  
"The Tide's In" 30X30 Oil, \$12,600



NICOLE KENNEDY  
"Beached in Capri" 20X20 Oil, \$2,200



# Juried Works



SHELBY KEEFE, AIS  
"Long Forgotten" 18X24 Oil, \$2,600



TROY KILGORE  
"Still Life with Ranunculus" 11X14 Oil, \$1,000



IVAN KELLY  
"The Unveiling" 16X20 Oil, \$3,200



PEGGY KINGSBURY  
"Pine Rhythms" 9X12 Oil, \$900



THOMAS KITTS  
"Morning on Deadline Falls" 12X16 Oil, \$1,900



OLGA KRIMON  
"Indian Corn" 24X20 Oil, \$3,340

## SUBSCRIBE

TO SOUTHWEST ART!  
Visit [subscribenow.southwestart.com](http://subscribenow.southwestart.com).



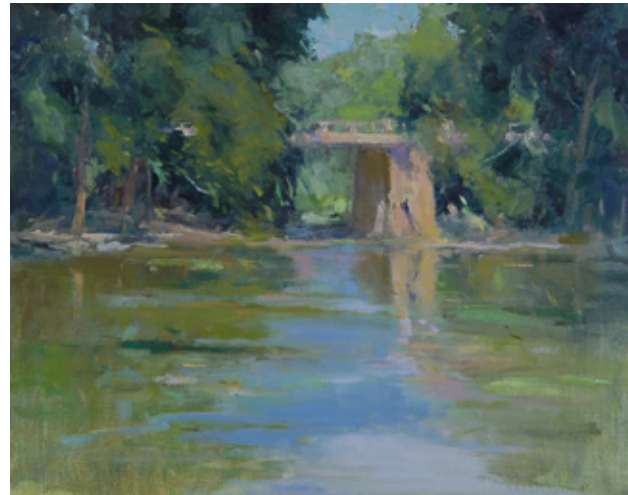
## southwest art

Sign up for our FREE  
editorial newsletter at  
[www.southwestart.com](http://www.southwestart.com).

# Juried Works



SHERYL KNIGHT  
"Evening Cypress" 16X20 Oil, \$2,200



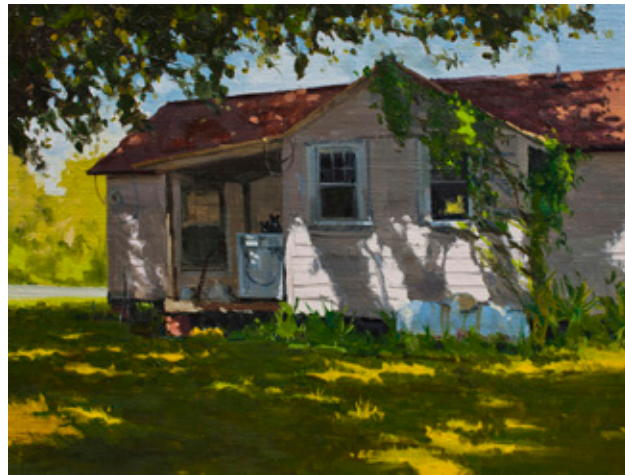
ANN LARSEN, AIS  
"The Bridge to Saratoga" 16X20 Oil, \$2,400



CAROLYN LINDSEY  
"Lunch" 14X14 Oil, \$1,200



MARGI LUCENA  
"Hearing San Lorenzo" 20X16 Pastel, \$1,900



GREG LAROCK, AIS  
"Porch Perch" 12X16 Oil, \$1,650



CHRISTINE LASHLEY  
"Open Gate" 12X16 Oil, \$1,100



MATT LINZ  
"Joey" 12X9 Oil, \$1,000



ANDRE LUCERO  
"Spring Flowers" 20X16 Oil, \$2,800



JEANETTE LE GRUE, AIS  
"Fresh Apples" 12X16 Oil, \$1,800



AMANDA LOVETT  
"Over the Top" 9X12 Oil, \$625



CJ LUKACSIK  
"Oakcreek Forest Trail" 20X30 Oil, \$2,500



SUSAN LYNN  
"Lover's Point" 12X9 Watercolor, \$850

# Juried Works



MARIA MARINO  
"The Breath of Spring" 24X31 Soft Pastel, \$3,800



CHUCK MARSHALL  
"Indiana Wildflowers" 12X16 Oil, \$1,600



JAMES MCGREW  
"Grandeur Point Sunset" 31X23 Oil, \$7,500



LORIE MERFELD-BATSON  
"Willow Creek" 12X18 Oil, \$1,250



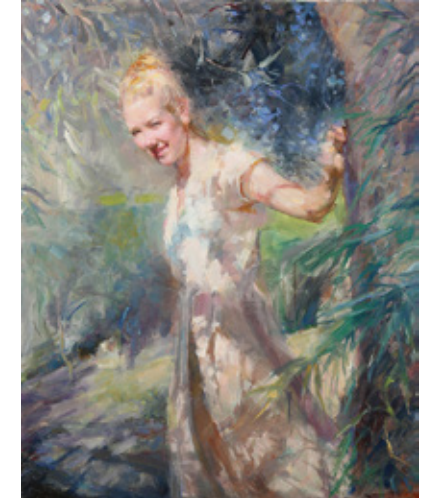
KICH MA  
"Rose" 14X11 Oil, \$1,500



DAVID MARTY  
"Gathering" 18X24 Oil, \$2,400



KATHRYN MCMAHON, AIS  
"Through Rough Waters" 22X28 Oil, \$3,200



LEI MIN  
"Summer Garden" 24X30 Oil, \$2,800



RICK MCCLURE, AIS  
"May 15, 2015" 12X12 Oil, \$950



LYNN MEHTA  
"Rocks and Reef" 12X16 Oil, \$1,500



NED MUELLER  
"Golden Hour-Cornwall" 9X12 Oil, \$1,800



MIKE NATALE  
"Zio" 16X12 Oil, \$2,200

# Juried Works



TOM NACHREINER  
"New Orleans Mule" 24X30 Oil, \$3,800



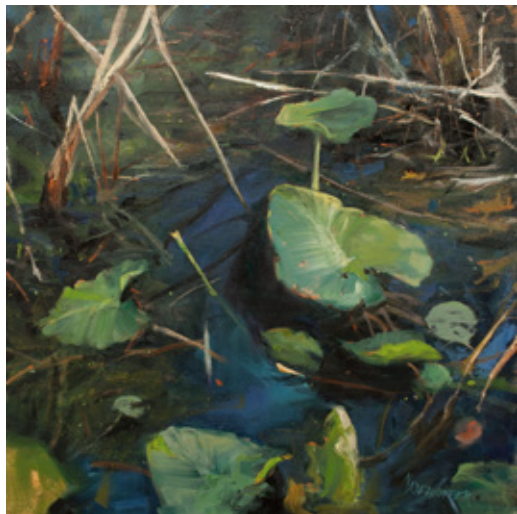
WES NEWTON  
"Over The Rocks" 14X11 Oil, \$1,100



ALINE ORDMAN, AIS  
"Rockville SC" 9X12 Oil, \$1,200



KRISTINE PALLAS  
"Strawberry Stand" 12X16 Oil, \$2,400



DEBRA NADELHOFFER  
"Lily Pads and Tadpoles" 24X24 Oil, \$2,600



NANCY NOWAK  
"Full Bloom" 14X11 Oil \$1,100



MIKYOUNG OSBURN  
"Last Stage" 12X12 Oil, \$1,300



DEREK PENIX  
"Sunrise in Cap Ferrat Harbor" 24X30 Oil, \$5,000



SALLY O'NEILL  
"Hazy Coastal Light" 11X14 Oil, \$850



RICHARD OVERSMITH  
"Summer Fields" 14X18 Oil, \$2,400

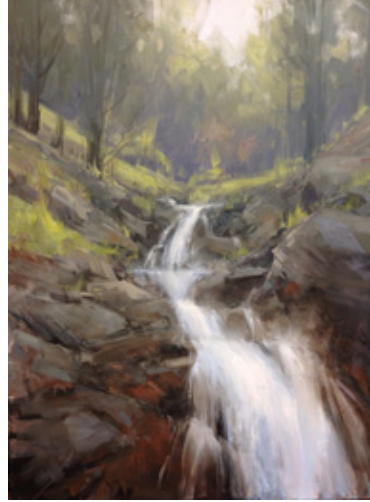


JAN PERKINS  
"Wyoming Ranch Horses" 10X12 Oil, \$1,150



RACHEL PETTIT, AIS  
"Day's End" 18X24 Oil, \$2,400

# Juried Works



STACEY PETERSON  
"Spring Runoff" 24X18 Oil, \$2,500



ELIZABETH POLLIE  
"Francis In February" 24X24 Oil, \$5,000



MARY PETTIS  
"Neighbors" 16X20 Oil, \$3,000



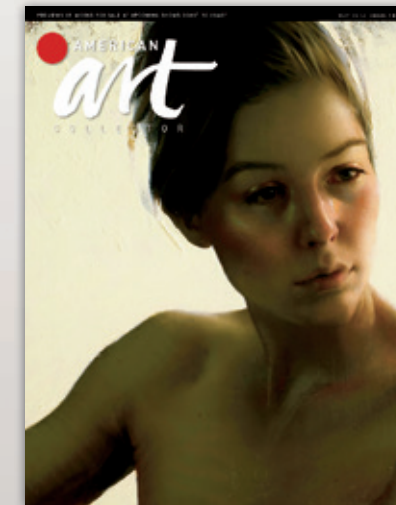
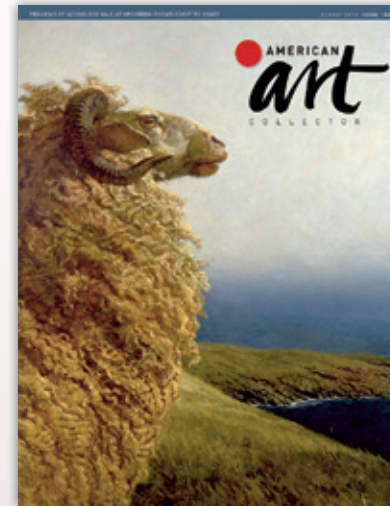
JASON PRIGGE  
"Gallery Night" 16X20 Oil, \$2,400



CAMILLE PRZEWODEK, AIS  
"Rose Cascade" 9X12 Oil, \$1,900



LORI PUTNAM, AIS  
"Spent Shells" 14X18 Oil, \$3,100



A PROUD MEDIA SPONSOR OF THE AMERICAN IMPRESSIONIST SOCIETY'S 16<sup>TH</sup> ANNUAL JURIED EXHIBITION.

www.AmericanArtCollector.com • Subscriptions: (877) 947-0792 • Advertising: (866) 619-0841

# Juried Works



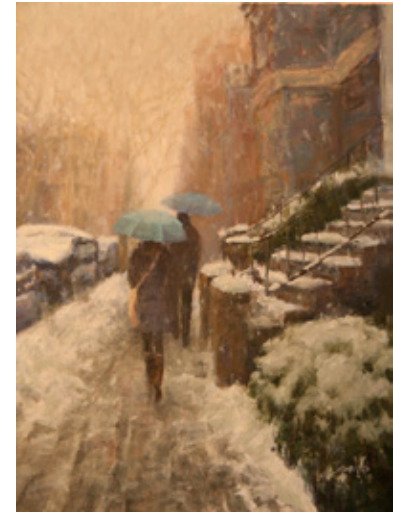
ROBIN PURCELL  
"After the Fire VIII" 14X16 Watercolor, \$1,850



RON RENCHER  
"Santa Rosa Creek Bed" 9X12 Oil, \$1,900



STUART ROPER  
"Blythe Island Sunset" 12X16 Oil, \$1,600



MARTHA SANDO  
"A Pair in Brooklyn" 16X14 Oil, \$1,800



MARY QIAN  
"In Dream" 24X36 Oil, \$6,800



JAMES RICHARDS, AIS  
"Little Chics" 20X24 Oil, \$4,800



JASON SACRAN, AIS  
"Fallen Memories" 11X14 Oil, \$1,800



SUSAN SARBACK  
"The Boaters" 9X12 Oil, \$1,600



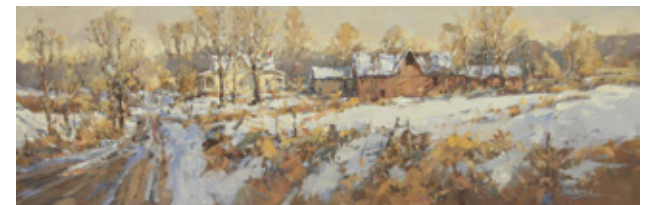
RODOLFO RIVADEMAR  
"Sacred Grove SLO CA" 16X20 Oil, \$2,500



LAWRENCE RUDOLECH, AIS  
"S.F. Taxi" 30X24 Oil, \$5,000



DREW SARKA  
"Sunlit Hollyhocks" 12X9 Oil, \$650



JERRY SMITH, AIS  
"Winter Fabric" 10X30 Oil, \$2,200

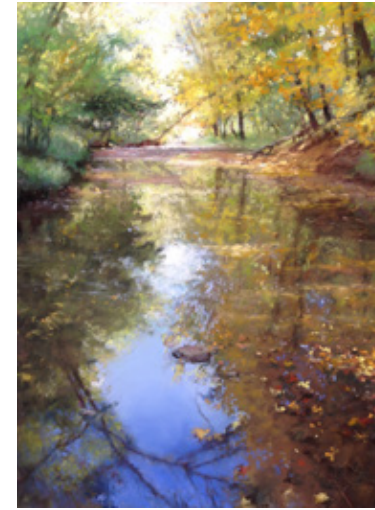
# Juried Works



AARON SCHUERR, AIS  
"Fog Light" 11X14 Pastel, \$1,600



DALY SMITH  
"Treeline" 16X20 Oil, \$885



DOREEN ST JOHN  
"Reflection" 24X18 Pastel, \$2,200



NANCY TANKERSLEY, AIS  
"Morning Geometry" 24X24 Oil, \$3,000



MICHAEL SITU, AIS  
"Harbor Impression" 12X16 Oil, \$2,000



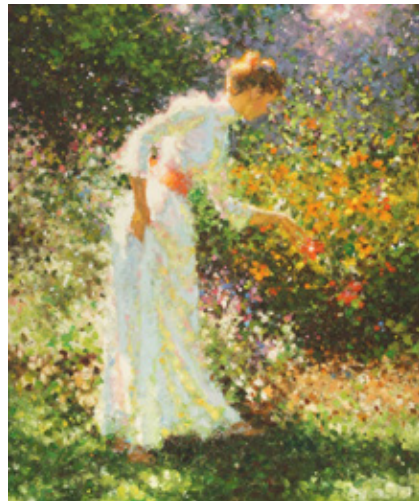
ROBERT SPOONER, AIS  
"Fresh Fish Live Crab" 20X16 Oil, \$2,600



JANET STAPINSKI GRECO  
"Courtyard Roses" 14X11 Oil, \$2,500



RANDALL TILLERY  
"Steelhead Falls" 22X28 Oil, \$1,900



CRAIG SREBNIK, AIS  
"In Her Garden" 24X20 Oil, \$3,400



ROBERT STEELE  
"End of Day II" 16X20 Oil, \$3,000



DAVID TUTWILER  
"Portrait of Richard" 20X16 Oil, \$5,200



CLIVE TYLER, AIS  
"Winter Canyon" 24X20 Soft Pastel, \$5,200

# Juried Works



GENE VAN ESSEN  
"South Park Meadow" 24X24 Oil, \$2,175



YER ZA VUE  
"Sunday Afternoon" 22X28 Oil, \$4,500



DAWN WHITELAW, AIS  
"Morning Latte" 24X36 Oil, \$4,500



MARY DOLPH WOOD, AIS  
"Pink Rose Bouquet" 11X15 Oil, \$1,600



OLEG ULITSKIY  
"Astoria Harbor" 24X30 Oil, \$2,500



JEFFREY WATTS  
"Man from Kathmandu" 16X12 Oil, \$4,500



TODD WILLIAMS, AIS  
"Courting Flute" 20X20 Oil, \$17,000



VLADISLAV YELISEYEV  
"Old Shrimpa" 28X20 Watercolor, \$2,700



KATHIE WHEELER  
"Blue Grass" 13.75x14.25 Oil, \$1,450



JIM WODARK  
"A Moment of Spring" 24X36 Oil, \$6,000



GARY YOUNG  
"The Harvest" 24X30 Oil, \$4,400



ANTONINA ZENIN, AIS  
"Morning Glare" 16X20 Oil, \$1,700



# Signature Members for 2015

To achieve Signature Member status with the American Impressionist Society, members must have been accepted into three AIS National Juried Exhibitions and have been a member for three consecutive years. Membership dues must be paid annually to retain Signature status. Congratulations to the following members who have achieved Signature Member status in the American Impressionist Society:

Valerie Ehret Amon	Lynn Dunbar	Jill Keller-Peters	Sheila Steinborn Savannah
Lanell Arndt	Kathleen Dunphy	MM Kent	Dorothy Schildknecht
Mitch Baird	Cynthia Edmonds	Greg LaRock	Grace Schlesier
Kevin Barton	Jeanne Edwards	Ann Larsen	William Schmidt
Bob Beck	Nancy Ellington	Jeanette Le Grue	Aaron Schuerr
Joli Ewing Beal	Fran Ellisor	Diane Lyon	Dan Schultz
Donald Biehn	Kathleen Elsey	Cathy Mabijs	Julia Seelos
Susan Blackwood	Mark Farina	Cindy Maronde	Jerry Shanafelt
Kay Bonanno	William Farnsworth	Susan Lange-Marshall	David Simons
Eric Bowman	Paula Fasken	Edith Martin	Michael Situ
Catherine Boyer	Barbara Flowers	Rick McClure	Jerry Smith
Marjorie Bradley	Tatyana Fogarty	John McCormick	Barbara Smythers
Joan Breckwoldt	Forrest Formsma	Kahtryn McMahan	Robert Spooner
Victoria Brooks	Kaye Franklin	Michele Pope Melina	Craig Srebnik
Anne Blair Brown	Eleanor Freudenstein	Gina Miller	Cheryl St John
Roger Dale Brown	Lisa Fricker	Sharon Nelson	Judith Stach
Ken Cadwallader	Paula Frizbe	Jane Newman	Jerry F Stone Jr.
Martha Carmody	Mary Garrish	Kathleen Newman	Nancy Tankersley
Nancy Hooper Carroll	Ilene Gienger-Stanfield	Pauline Ney	Kathryn Townsend
Valerie Carson	Teri Gortmaker	Rae O'Shea	Susan Truitt
John Michael Carter	Frances Gottlieb	Marci Oleszkiewicz	Kathryn Turner
Lorenzo Chavez	Lindsey Bittner Graham	Aline Ordman	Clive Tyler
Barbara Chenault	Debra Joy Groesser	Marian Pacsuta	Michele Usibelli
Barbara Churchley	Robert Grogan	Virginia Pendergrass PHD	Ken Wallin
James Coe	Barbara Hafner	Dena Peterson	Mary Weber
John Cook	Diann Haist	Rachel Pettit	Dawn Whitelaw
Bethanne Cople	Marva Harms	Jacob Pfeiffer	Cindy Wilbur
Gene Costanza	Carolyn Hesse-Low	Ann Powers	Todd Williams
Donald Crocker	Roger Heuck	Theresa Proctor	Toni Williams
Sue Crossland	Dali Higa	Camille Przewodek	Daniel Wise
Judy Crowe	Brenda Hofreiter	Lori Putnam	Mary Dolph Wood
Katie Dobson Cundiff	Hai-Ou Hou	James Richards	Tonya Zenin
William Daniel	Julie Houck	Geraldine Riffenburgh	
Mary Ann Davis	Debra Huse	Carol Roberts	
Daisy De Puthod	Joy Jackson	Gladys Roldan-de-Moras	
Dee Beard Dean	Wilma James	Marilyn Rose	
Margaret Dean	Brent Jensen	Vanessa Rothe	
Adelaide DeAntonio	Michael Chesley Johnson	Lawrence Rudolech	
Christine Debrosky	Sandra Johnson	Gregg Russell	
Donna DeLaBriandais	Becky Joy	Val Sandell	
Charlotte Dickinson	Shelby Keefe	Jason Sacran	

# Associate Members 2015

Linda Abbott	Judith Babcock	Victoria Blaker	Michael Budden
Kim Abernethy	Ernie Baber	Donna Bland	Dean Buhler
Richard Abraham	Frank Baggett	Elizabeth Blaylock	Susie Burch
Sharon Abshagen	Thomas Bailey	Linda Blondheim	Margena Burnett
Monica Achberger	Costanza Baiocco	Stan Bloomfield	Sheryl Burritt
Gil Adams	Gordon Baker	Jacquelyn Blue	Joseph Burrough
Laurie Adams	Suzie Baker	Tom Bluemlein	Carole Buschmann
Simon Addyman	Jill Banks	Anita Blythe	Michelle Byrne
Diane Ainsworth	Chantel Barber	Margaret Bobb	John Caggiano
Janet Akers	Joseph Baris	Laurel Boeck	Robert Calcagno
Robert Akers	Clifford Barnes	Mark Boedges	J. E. Calhoun
Michael Albrechtsen	Susan Barnes	Liz Bonham	Lorie Callahan
Roger Alderman	Susan Barnes	Miki Boni	Larry Cannon
Kevin Aldrich	Cindy Baron	Winifred Booth	Judith Carbine
Anne Allbeury-Hock	Stacy Barter	Grace Boothe	Randy Carden
Krystal Allen	Vicki Bartholomew	Nancy Boren	Christophe Cardot
Melody Allen	Jane Barton	Roy Boswell	Kim Carlton
Vanya Allison	Jill Basham	SM Botstein	Pat Carney
Jan Allmon	Nancy Bass	Gerald Botzum	Cynthia Carrillo
Stephanie Amato	Tricia Bass	Ginger Bowen	Jim Carson
Tim Ames	Susan Bayard Whiting	David Boyd Jr	Cyndy Carstens
Douglas Andelin	Mark Beale MD	Elinor Boyd	Robin Lee Caspari
Bren Anderegg	Jennifer Beaudet	Richard Boyer	Victoria Roach Castillo
Janet Anderson	Chula Beauregard	Lee Boynton	Dorothy Cavanagh
Nancy Anderson	Dan Beck	Chris Brandley	Terry Chacon
Susie Anderson	Kevin Beck	Donna Branson	Gloria Chadwick
Natalia Andreeva	Nancy Becker	Lon Brauer	Timothy Chambers
Bill Angresano	Michael Beeman	Loryn Brazier	Marianne Champlin
Concetta K Antico	Brenda Behr	Thomas Breeden	Shan Chang
Barbara Applegate	Kevin Beilfuss	Jack Brendlinger	Jane Chapin
Joan Archer	Leslie Belloso	Marla Brenner	Mark Chatov
Heather Arenas	Carol Benally	Trisha Bridges	Rajat Chaudhuri
Joe Anna Arnett	Karen Bennett	Claudia Brookes	Esperanza Chavez
Robert Arnett	Lori Beringer	Charlene M Brown	Frank Cheatle
Charlotte Arnold	Seamus Berkeley	Gina Brown	Durinda Cheek
Melissa Arthur	Judith Berlinger	Hilda Brown	Robin Cheers Drerup
Mary Aslin	Jill Berry	Krystal Brown	Cecilia Chenault
Susan Astleford	Marty Biernbaum	Sandy Browning	Hui Lai Chong
Cliff Austin	Donna Biggee	Deborah Bruce	Jane Christie
Luke Autrey	Gary Binder	Lauren Bruce Wodicka	Lawrence Churski
Helen Avalon	Bruce Bingham	Beverly Bruntz	Sandra Ciaramitaro
Patricia Awapara	Sherry Binkley-Nakasaki	Rulei Bu	Adam Clague
Ellen Ayotte	Luis Bitencourt	Thomas Buchs	Jackie Clark
Loretta Narwicz Babak	Linda Blackburn	Jenny Buckner	Judy Clark

# Associate Members 2015

Lizabeth Clark	Arlene Daniel	Lisa Eastman	Kathryne Fisher	Holly Glasscock	Coraly Hanson	Karen Ann Hitt	Jean-Pierre Jacquet
Colette Claros	Anne Danly	Jeanne Echternach	Linda Fisler	Sally Glenn	Erin Hanson	Robert Hogan	Barbara Jaenicke
Patricia Clayton	Christiane David	Randon Eddy	Jane Flanders	Lorraine Gloré	Julie Hanson	Shari Hohl	Deanna Jaugstetter
Maria Clemens	Bill Davidson	Judith Edenstrom	Steve Fleming	Jim Glover	Marc Hanson	Linda Holmes	Jan Jewell
Patricia Clifton	Barbara Davis	Victoria Ekelund	Marilyn Flinn	Emily Goldfield	Scott Harding	Marcia Holmes	JJ Jiang
Jeanne Clohisy	Derek Davis	Martha Elder	Laura Lloyd Fontaine	Laura Goldman Weinberg	Ann Hardy	Pam Holnback	Marie Johannes
Barbara Coffey-Jones	Julie Davis	Judy Elias	Terri Ford	Elaine Gomer	Alice Harpel	Michael Holter	Frankie Johnson
Marcie Cohen	Cynthia Dawley	Kathryn Ellis	Beth Forst	Georges Gomez	Nita Harper	Paula Holtzclaw	Oksana Johnson
Kit Coker	Debra Dawson	Marianne Elson	Marian Fortunati	Tommer Gonser	Philip Harris	Susan Hong-Sammons	Robert Johnson
Yvonne Colclasure	Camille Day	Susan Elwart-Hall	Tiffany Foss	Susan Gordinier	Ruth Harris	Christine Hooker	Robin Johnson
Bets Cole	Lamya Deeb	Beverly Endsley	Annie Fountain	David Gordon	Cathie (Dianne) Harrison	Lenn Hopkins	Sibyl Johnson
Barbara Coleman	Angalee Deforest	Esther Engelman	Colleen Fox	Bonnie Gore	Vincenza Harrity	Karen Horne	Talya Johnson
Sylvia Cooley	Shawn Deitch	Lisa Engle	Jacquelyn Fox	Doug Gorrell	Jill Hartley	Stacey Horrigan	Rusty Jones
Donna Colleran	Rick Delanty	Lee Englund	Laine Francis	Millie Gosch	Staci Hartman	Richard Horrocks	Michelle Jung
Dede Collicott	Camille Dellar	Aimee Erickson	Nancy Franke	Sally Grant	Stephanie Hartshorn	Mark Kelvin Horton	Jane Kafigian
Valerie Collymore	Sandra DeLong	Kerry Eriksen	Mary Frankel	Dan Graziano	Myrrh Haslam	Susan Hotard	Lisa Kalajan
Dag Compeau	Mary Dennis	Susan A Esbensen	Penny French-Deal	Janet Greco	Rebekah Haslett	Ellen Howard	Tricia Kaman
Jim Connelly	Haidee DeRouen	Louis Escobedo	Katherine Frey	Chad Greene	Ray Hassard	Kathy Howard	Deepali Kapatkar
Christiana Cooper	Wendy Devarieux	Lois Eskenazi	Jay Friedenberg	Dina Gregory	Ed Hatch	Marion G Howard	Michele Karahalios
Richard Cooper	Carol Devereaux	Mary Pat Ettinger	Howard Friedland	Diane Gremillion	Susi Havens-Bezaire	Betty Huang	Lucinda Kasser
Christopher Copeland	Julie Devine	Diane Eugster	Marla Friedman	Kristin Grevich	Denise Hawkins	Gary Huber	JoAnne Kauflin
Joyce Corns	Betty DiBartolomeo	Amy Evans	Laurel Fry	Kathryn Grider	Rodney Hayslip	Linda Hugues	Sloane Keats
Mary Lou Correia	David Dibble	Beverly Ford Evans	Stuart Fullerton	Joseph Grieco	Deborah Healy	Sarah Hull	John Kelley
Annette Cossentine	Charles Dickinson	Linda Evans	Jake Gaedtke	Carol Griffin	Ruth Heffron	Shelley Hull	Ivan Kelly
Dorothy Courson	T R Dickinson	Dr Lou Everett	Florence Gaffney	David Griffin	Carla Hefley	John Hulsey	Nicole White Kennedy
Hilarie Couture	MJ Dicus	Brenda Everson-Wiesman	Shari Gaines	Barb Grimmer	Joel Heger	Jane Hunt	Glenda Keyes
Ann Cowden	Jennifer Diehl	Patricia Fabian	Katherine Galbraith	Dorothy (Dodi) Groesser	Lou Heiser	Ellen Hurley	Walid Khalaf
Kathleen Coy	Rebecca Dierickx-Taylor	Shirley Fachilla	Richard Galusha	John Groesser	Christian Hemme	Jennifer Hurley	Troy Kilgore
Valerie Craig	Jerolyn Dirks	Joseph Fama	Ann Gargotto	Mel Grunau	Eileen Hendren	Susiehyer	Peggy Kingsbury
Kay Crain	Pam Dittloff	Sandy Farley	Boris Garibyan	Vickie Guthrie	Laurie Hendricks	Charles Iarrobino	Karol Kintz
William Cramer	Linda Dobkin	Karolyn Farrell	Darlene Garmaker	Gwendolyn Gutwein	Brenda Hendrix	Carol Iglesias	Dee Kirkham
James Crandall	Frances Dodd	Diane Fechenbach	Aida Garrity	Joseph Gyurcsak	Rebecca Hendrix	Kathryn Ikeda	Jamie Kirkland
Rob Crombie	Fred Doloresco	Mark Fehlman	Pamela Gatens	Cynthia Haase	Kay Henry	Kathy Imel	Julie Kirkland
Nancy Crookston	Loretta Domaszewski	Ann Feldman	Betty Gates	Elaine Hahn	Michele Henry	Peggy Immel	Kim Kirkland
Linda Croteau	Moira Donohoe	Lori Feldpausch	Sharon Gates	Tracy Haines	Susan Henry	Pamela Ingwers	Rita Kirkman
Diana Cummings	Ramona Dooley	John Felton	Judy Gelfert	Heidi Haislmaier	Rozanne Hermelyn Di Silvestro	Rose Ireland	Thomas Jefferson Kitts
Sally Cummings Shisler	Pat Doughty	Susan Ferrara	Beverly Gerehart	Nancy Haley	David Hettinger	Carmen Italia	Harumi Kiyota
Beverly Cunningham	Linda Dragonette	Cynthia Feustel	Steve Gerhartz	Kim Hall	Patience Heyl	Tabby Ivy	Myra Knapp
Hope Cunningham	Christine Drewyer	Jan Filarski	Jane Geronime	Joan Hambleton	Sheryl Hibbs	Mary Jabens	Sheryl Knight
Ann Currey	Mary Duncan	Chrisanne Finefrock	Lynn Gertenbach	Larry Hamilton	Marjorie Hicks	Tatijana Jacenkiw	David Knowles
Rita Curtis	Diana Dunlop	Trey Finney	Cathy Gibbons	Sharon Hammer Baker	Nancy Hill	Rebekkah Jackson	Fran Kneuppel
Attila Czigenyi	Suzy Durband	Pat Fiorello	Victoria Gillieron	Gary Hammer	Rebecca Hill	Eric Jacobsen	Jack Koonce
Carla D'Aguanno	Scott Dwyer	Charles Firestone	Mark Gingerich	Kippy Hammond	Steven Hill	Maryanne Jacobsen	Jeremy Kraemer
Mark Daly	John Eagle	Susan Firestone	Cheryl Ginsburg	Jeanine Handell	Anthony Hilscher	Errol Jacobson	Allen Kriegshauser
Tony D'Amico	Joy Eakin	Margaret Fischbeck	Karen Glanders	Burton Hands	Thomas Himsel	James Jacobson	Olga Krimon

# Associate Members 2015

Marka Kroeger	Sheryl Lott	Janice McCubbin	Laurelaine Morrison	Diane Overmyer	Leslie Pratt-Thomas	Stan Rogers	Ann Self
Susan Kuznitsky	Amanda Lovett	Susan McCullough	Elizabeth Mowry	Richard Oversmith	Linda Price	Stuart Roper	James Selle
Ron Lace	Bill Lovett	Linda McFarland	Ned Mueller	Rita Pacheco	Sarah Price	Cynthia Rosen	Kenneth Selzer
Anne Laddon	Gailen Lovett	Cynthia McGarry	Diane Mullaly	Marilyn Paine	Jason Prigge	Arlon Rosenoff	Scott Serafica
Theresa Laird	Andrew Lu	September McGee	Barbara Mulleneaux	Samuel Pak	Henry Prikryl	Susan Rosso	David Seward
Frank LaLumia	Julia Lu	James McGrew	Brian Murphy	George Paliotto	Linda Prokop	Elizabeth Rouland	Naomi Shachar
Diane Lamere	Margi Lucena	Mary McIntosh	Joan Murray	Kristine Pallas	Nancy Paris Pruden	Ed Routon	Daria Shachmut
Anna Lancaster	Andre Lucero	Corinne McIntyre	Jennifer Murtha	Joseph Palmerio	Mark Pullen	Ann Rowley	Eugenia Shapiro
Dale Landrum	CJ Lukacsik	Jane McIntyre	Tom Nachreiner	Amber Palomares	Robin Purcell	Abraham Rucker	Ann Sharp
Janis Langley	Jaqueline Lukowski	JoAnne McLaren	Debra Nadelhoffer	Ann Pape	Roberta Puttrich	Sally Ruddy	Kathy Sharpe
Kirk Larsen	Kaaren Lundeen	Dorothy McLennan	Ferial Nassirzadeh	D. Jordan Parietti	Steve Puttrich	Hilda Rueda	Corey Shaughnessy
Christine Lashley	Susan Lynn	Vicki McMurry	Mike Natale	Anton Pavlenko	Mary Zhenhul Qian	Gerald Ruggiero	Diana Shearon
Lilianne Laurin	Michael Lynne	David McNeill	Christine Nauman	Jill Peckelun	Sonja Quarles	Debra Russell	Sarah Sheffield
Karen Lavalley	Susan Lyslo	Jonathan McPhillips	Rogers Naylor	Carol Peek	Lee Quincy	Scott Ruthven	Margaret Sheldon
Joanne Lavender	Kich Ma	Teri McReynolds	Patricia Nebbeling	Sandra Pelfrey	Carole Rafferty	Barbara S Ryan	Laura Shepard
Kristan Le	Carolyn MacConnell	Nancy McTigue M.D.	Susan Neese	Derek Penix	Maria Randolph	Karlene Ryan	Laurel Sherrie
Dottie Leatherwood	Patricia Maguire	Nancy Medina	Harold Nelson	Jan Perkins	Maggie Rapp	Robert Ryan	Jeanette Sherritze
Hewook Lee	Vicki Maguire	Lynn Mehta	Sherry Nelson	Robbie Perrotti Younger	Caroline Ratliff	Louise Sackett	Paula (Jo) Sherwood
Jeff Legg	Catherine Mahoney	Margueritte Meier	Pamela Newell	Amy Peterson	Jeanne Reavis	Cheri Saffro	Sandhya Shetty
Wyatt LeGrand	Miguel Malagon	Louise Mellon	Christene Newlund	Jerald Peterson	Michael Reibel	David Salerno	Heejune Shin
Margaret Leiby	Thia Malenchik	Yvonne Mendez	Deborah Newman	Lauren P Peterson	Rick Reinert	Jeremy Sams	Rita Shulak
Carol Leif	Will Maller	Lorie Merfeld-Batson	Diane Newsome	Stacy Peterson	Richard Reminger	Manon Sander	Cynthia Shuler
Mark Lemon	Georgia Mansur	Nancie Mertz	Li Newton	Linda Petrie Bunch	Ron Rencher	Martha Sando	Fay Shutzer
Karen Leoni	Ralph Mantia Sr.	Sumon Methangkool	Wes Newton	Mary Pettis	Maria Repke	Deborah Sanks	Felicity Sidwell
Renee Leopardi	Ivadell Marie	Alan Metzger	Peter Nissler	Ronald Phelps	Spike Ress	Dave Santillanes	Brenda Siegel
Doreen Lepore	Maria Marino	Pat Meyer	Laurette Nitka	David Phillips	Rob Rey	Chris Saper	Seppo Siimes
Julia Lesnichy	George Marks Jr.	Susan Migliore	Judy Nocifora	Faye Phillips	David Reyes	Susan Sarback	Carol Simon
Randie Hope LeVan	Chuck Marshall	Cristen Miller	Donna Noice	James Phillips	Craig Reynolds	Andrew Sarka	Aleada Siragusa
Laura Levine	Dirk Martin	Michael W Miller	Niles Nordquist	Maren Phillips	Sara Jane Reynolds	Patrick Saunders	Julie Skoda
Sherrie Russ Levine	Tom Martino	Sylvia Miller	Kay Northup	Rosie Phillips	Dennis Rhoades	Gail Sauter	Neal Slaten
Alane Levinsohn	David Marty	Pat Millin	Carol Novotne	Haden Pickel	Susan Richardson	Marsha Savage	Chad Smith
Dona Lewinger	William Marvin	Iryna Milton	Nancy Nowak	Sandra Place	Keiko Richter	Mary Sayas	Daly Smith
Carolyn Lewis	Stephanie Marzella	Lei Min	Elaine Nunnally	Susan Ploughe	Deborah Glass Ridgley	Dayle Sazonoff	Eileen Smith
Karen Lewis	Liz Jorg Masi	Coni Minneci	Paul Nutting	Michael Poindexter	David Riedel	Greg Scheibel	Nedra Smith
Kay Lewis	Jane Mason	Amy Minson	Norman Nybo	Julie Pollard	Jennifer Riefenberg	Barbara Schilling	Rae Smith
Runyu Li	Marie Massey	Leonard Mizerek	Dan Oakleaf	Elizabeth Pollie	Robert Rigsby	Mary Schiros	Jennifer Smith Rogers
Shuang Li	Patricia Matranga	Carol Moates	Gerald Obregon	Irene Pomirchy	Maureen Riley	Hazel Schlesinger	Samuel Smith
Cheng Lian	Susan Hediger Matteson	Dan Mondloch	Kathie Odom	Priscilla Portenier	Cynthia Riordan	Betty Schmidt	Sue Favinger Smith
Sandy Lindblad	Mary Maue	Mark Monsarrat	Gregori Oleanik	Brandy Posey	Rodolfo Rivademar	Karen Schmitz	Susan Smolensky
Carolyn Lindsey	Chris McAllister	Linda Faser Mooney	Christy Olsen	Lesley Powell	Lynn Rix	Raphael Schnepf	Neva Smoll
Matt Linz	Deborah McAllister	James Moore	Hugh O'Neill	Pamela Powell	Krystyna Robbins	Elizabeth Schwier	Ted Smuskiewicz
Susan List	Mick McAndrews	Laurie Moore	Sally O'Neill	Anette Power	Bryan Roberts	Ruth Scott	Elizabeth Smythe
Terrie Lombardi	Abigail McBride	Steve Moppert	Margaret Orbon	Angela Powers	Barb Robinson	Brent SeEVERS	Yelena Snovsky
Jimmy Longacre	Cynthia Hillis McBride	Hedi Moran	Mikyong Osburn	Richard Prather	Thomas Robinson	Larry Seiler	Wendy Soliday
Carolyn Lord	Eileen McConkey	Gini Morelock-Bosco	Terry Ouimet	James Pratt	Kathleen Robison	Gaye Sekula	Tara Sood

# Associate Members 2015

Samila Sasic	Carol Lee Thompson	Decker Walker	Carol Willis
Margie Spalding	Carolyn Thompson	Marti Walker	Beth Winfield
Kathleen Sparkman	Marte Thompson	Nina Cobb Walker	Karen Winters
Lisa Spencer	Wendie Thompson	Patrice Walker	Susan Wipf
Cristina Speer	William Thompson	K K Walling	Marie Wise
Anne Spoon	Ron Thomson	Charles Young Walls	Sandra Witty
Cynthia Spruill	Nori Thorne	Kathleen Walsh	Jim Wodark
Cheral Squyres	Betty Tichich	Doris Walters	Valarie Wolf
Doreen St John	Diane Tigue	Abigail Warman	Enid Wood
Mary Stahl	Randall Tillery	Ann Watcher	Fran Wood
John Stanford	Nancy Tokos	Jeffery Watts	Frederic Michael Wood
Terry Stanley	Jude Tolar	Cecilia Weber	Sherry Wooley
Ardith Starostka	Nancy Tongue	Chuck Weber	Kathleen Worgul
Robbie Staubes	Karin Toppel	Donald Weber	Amy Worth
Marvin Steel	Donna Trent	JoAnn Weber	Stephen Wysocki
Robert Steele	Peggy Trigg	Katrina Weber	Jianzhang Xu
Ann Steverson	Ann Tristani	Kevin Weckbach	Vladislav Yelisyev
Shirley Stocks	Karol Tucker	Janet Weidel	Peter Yesis
Diane Stolz	Andree Tullier	Karen Weir	Ping Yin
Jan Stommes	Bridgette Turner	Kathryn Weisberg	Loretta Yoder
Dr. Shirley Stone	Cecy Turner	Patricia Weiss	Barbara Yongue
Thalia Stratton	David Tutwiler	Beatrice Welch	Gary Young
Carol Strockwasson	Dan Twitchell	Robin Wellner	Christine Zachary
Sandra Strohschein	Tim Tyler	Jeffrey Wells	Carol Zack
Gina Strumpf	Ron Ukrainetz	Shirle Wempner	Edward Zack
Rene Stubblefield	Oleg Ulitskiy	Julie Wende	Jan Zhang
Charles Stup	Joanne Unger	Martin Wessler	Anton Zhou
Kelly Sullivan	Virginia Unsell	Carol West	Xiaogang Zhu
Gregory Summers	Gene VanEssen	Amos Westmoreland	Craig Zuger
Cristine Sundquist	Kim Vanderhoek	Thomas Wezwick	
Marilynn Swan	Cornelis VanSpronsen	Paula Wheat	
James Swanson	Mario Vargas	Kathie Wheeler	
Jan Swarbrick	Mary Miller Veazie	Ginger Whellock	
Dorothy Swope	Yolanda Velasquez	Mark White	
Richard Szkutnik	Ellen Vestergaard	Diane Whitehead	
Elizabeth Taft	Maureen Vezina	Jessica Wicken	
Kathy Tate	Marissa Vogl	David Wicks	
Jennifer Taylor	Michael Volker	Julie Wiegand	
James Tennison	Eric Von Schmidt	Chris Wilke	
Kate Thayer	Kerry Vosler	Karen Wilkerson	
Liz Thele	Yer Vue	Keith Wilkie	
Eric Thingstad	Barbara Wachter	Sharon Will	
Charles Thomas	Maryana Wagon	Christina Willey	
Sherri Thomas	Anna Wainright	David Williams	
Ann Thompson	Ann Waisbrot	Roger Williams	



## Our Mission Statement

In 1998, Florida artists William Schultz, Charlotte Dickinson, Marjorie Bradley and Pauline Ney founded the American Impressionist Society, Inc. (AIS). Their goal: "To promote the appreciation of American Impressionism through exhibitions, workshops and other media."

## Membership

Membership is open to American Impressionist artists who are legal United States residents, US citizens living abroad, or anyone who would like to support American Impressionism.

## Associate Members

Open to all levels. You may join by mailing the completed membership form below with a check for annual dues of \$50. You may also join online by going to the "Join" page on the AIS website, [www.americanimpressionistsociety.org](http://www.americanimpressionistsociety.org). AIS Associate Members in good standing may enter the AIS National Juried exhibition (additional entry fee required).

## Signature Members

Associate Members who have completed three consecutive years as an AIS Associate Member, AND who have been accepted into three AIS National Juried Exhibitions, may apply for Signature status when renewing membership in January each year. Our Signature Members have earned their titles by showing exceptional impressionistic fine art. Signature Members in good standing may enter AIS National Juried Exhibitions (additional entry fee required), state "AIS" after name, be listed on the AIS website and other promotional materials. Signature status is maintained with annual membership dues of \$50.

## Master Artists

Masters are invited by the AIS Board of Directors and may sign "AISM" after their name. Masters are selected carefully and are considered to be leaders in the art community. Nationally known, they epitomize the highest level of impressionism and passionately give back to the society by sharing their knowledge.

### 2016 Membership Form (Annual Membership Dues valid January-December)

Artist Memberships (check one):	Supporting Memberships (check one):
<b>Associate Membership</b> (\$50): <input type="checkbox"/> Renewal <input type="checkbox"/> New Member <b>Signature Membership</b> (\$50): <input type="checkbox"/> Renewal <input type="checkbox"/> Request New* <small>*As a current Associate Member, I request recognition as an AIS Signature Member. I certify that I have been an Associate Member for at least the past 3 consecutive years and have been accepted into at least three AIS National Juried Exhibitions (list years): _____, _____, _____</small>	For those who wish to support our mission of promoting the appreciation of Impressionism. AIS is a 501(c)(3) nonprofit corporation. Contributions are tax deductible. Thank you for your support! <input type="checkbox"/> <b>Supporter</b> (\$50) <input type="checkbox"/> <b>Contributor</b> (\$100) <input type="checkbox"/> <b>Ambassador</b> (\$250) <input type="checkbox"/> <b>Sustainer</b> (\$750) <input type="checkbox"/> <b>Leader</b> (\$1,500) <input type="checkbox"/> <b>Patron</b> (\$3,000+)

To help us update our records, please print clearly all information below:

Name \_\_\_\_\_ Website \_\_\_\_\_  
 Address \_\_\_\_\_ City \_\_\_\_\_ State \_\_\_\_\_ Zip \_\_\_\_\_  
 Phone \_\_\_\_\_ Cell \_\_\_\_\_ Email \_\_\_\_\_

Mail form and check, payable to American Impressionist Society Inc, to Don Groesser, AIS Treasurer, PO Box 27818, Omaha NE 68127. Membership dues must be paid each year to be eligible to enter the national juried exhibition and to maintain Signature status with all its rights and privileges. Questions? Call Don or Debra Joy Groesser, 402-592-3399.

EXCELLENCE IN ART SINCE 1963.



RICHARD BOYER



CALVIN LIANG



JOE ANNA ARNETT



SHERYL KNIGHT



ROBERT SPOONER



JOSEPH GYURCSAK



LESLIE BELLOSO



KATHLEEN COY



MARK BOEDGES

**JACKSON HOLE** PO Box 1149, 130 E. Broadway, Jackson, WY 83001 (307) 733.3186  
**SCOTTSDALE** 7330 Scottsdale Mall, Scottsdale, AZ 85251 (480) 945.7751



[WWW.TRAILSIDEGALLERIES.COM](http://WWW.TRAILSIDEGALLERIES.COM) [INFO@TRAILSIDEGALLERIES.COM](mailto:INFO@TRAILSIDEGALLERIES.COM)

**TG** | **TRAILSIDE**  
GALLERIES